

## G $\alpha_s$

**Catalog Number:** 21007

**Gene Symbol:** Gnas

**Description:** Anti-G $\alpha_s$  Rabbit Polyclonal Antibody

**Background:** Heterotrimeric G proteins are critical cellular signal transducers. G $\alpha_s$  represents one sub-family of G proteins that could mediate the stimulation of adenylyl cyclases.

**Immunogen:** Recombinant full length protein of G $\alpha_s$

**Tested Applications:** ELISA, WB, IHC

**Recommended Dilutions:**

ELISA 1:100-1:5000

WB 1:100-1:2000

**Concentration:** 1 mg/ml

**Host:** Rabbit

**Clonality:** Polyclonal

**Purity:** Purified from serum

**Format:** Liquid

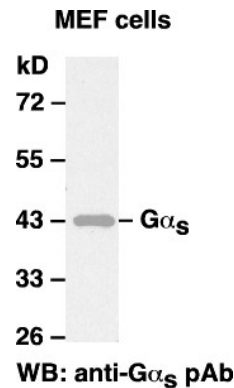
**Preservative:** no

**Constituents:** PBS (without Mg<sup>2+</sup> and Ca<sup>2+</sup>), pH7.4, 150 mM NaCl, 50% glycerol

**Species Reactivity:** G $\alpha_s$  antibody recognizes G $\alpha_s$  of vertebrates

**Storage Conditions:** Store at -20°C. Avoid freeze / thaw cycles

### Western blot:



### Western blot analysis of G $\alpha_s$ proteins.

MEF whole-cell lysate was used for western blots.

FOR RESEARCH USE ONLY. NOT FOR DIAGNOSTIC APPLICATIONS